

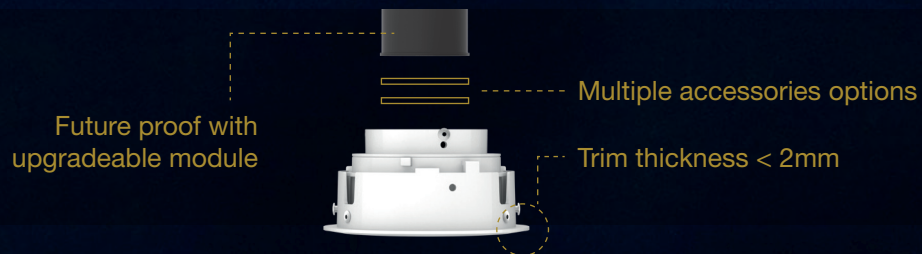
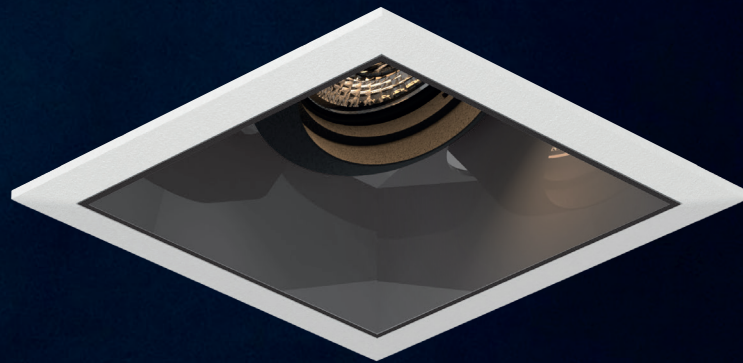
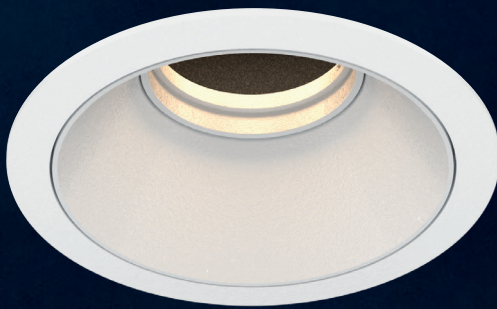
Reduced Glare

ELR®

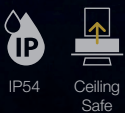
VASARI

DOWNLIGHT SERIES

A series of premium recessed downlights available in various sizes, shapes, and finishing. Paired with ELR's highly configurable LED modules, the Vasari downlight series offers a high degree of flexibility, aesthetics and functionality for the most discerning of applications.



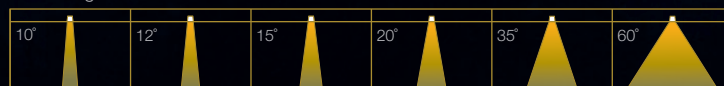
Fixture Features



Module Colour Temperature Variation



Beam Angle



Driver Dimming Variation

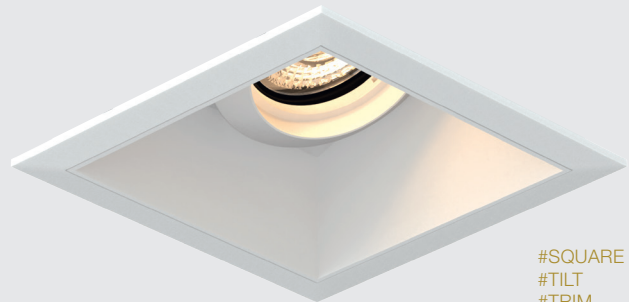


VASARI 6

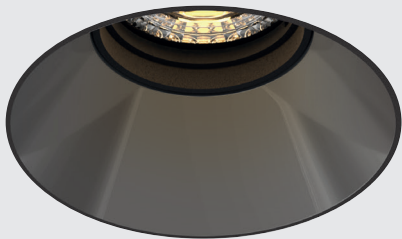
RECESSED ROUND FIX / TILT DOWNLIGHT LUMINAIRE



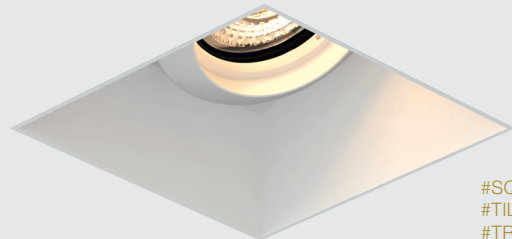
#ROUND
#FIX
#TRIM



#SQUARE
#TILT
#TRIM



#ROUND
#FIX
#TRIMLESS



#SQUARE
#TILT
#TRIMLESS

TECHNOLOGY AND FEATURES

ATePS
Advanced Thermal Protection System

ComfyEYE
Low Flicker, No Risk (IEEE 1789)

BEAM
Converging Optical Lens Maximising LOR

Ceiling Safe

AVAILABLE OPTIONS

FIXTURE COLOUR OPTIONS

Trim Colour Options

Reflector Colour Options

MATT WHITE RAL9003

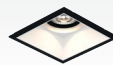
MATT BLACK RAL9011

CHROME

MATT WHITE RAL9003



MATT BLACK RAL9011



*Chrome reflector is valid for round shape and fix angle fixtures only.

ACCESSORIES



Honeycomb Anti-Glare Louvre



Soft Lens



Linear Spread Lens



IP54

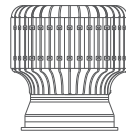


Adapter Ring

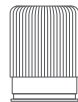
*IP54 seal accessory is valid for fix angle fixtures only.

***Adapter Ring accessory is necessary when paired with COIN, 35 or 50 series LED module variants.

LED MODULE



700P / 500P / 300P



100C/P

SINGLE CCT



2700K



3000K



3500K



4000K



5000K



ProART

ProART98

*ProART98 option is not available with 500P and 700P LED Modules.

WARM DIM



100P

tuneWHITE



300P

flexiK



100P

RGBW



700P / 100P

RGBA



700P

**tuneWHITE and flexiK are recommended to be paired with Soft Lens for better colour mixing effect.

*Drivers for RGBW / RGBA LED modules are sold separately.

	12°	15°	20°	35°	60°
700P / 500P / 300P		✓		✓	✓
100P / 100C	✓		✓	✓	✓
100P	✓		✓	✓	✓
300P		✓		✓	✓
100P			✓	✓	✓
700P / 100P				✓	✓
700P				✓	✓

DRIVER DIMMING



(ND)



(PH)



(AN)



(DA)

*Phase dimming option is not available with 500P and 700P LED Modules.

VASARI 6

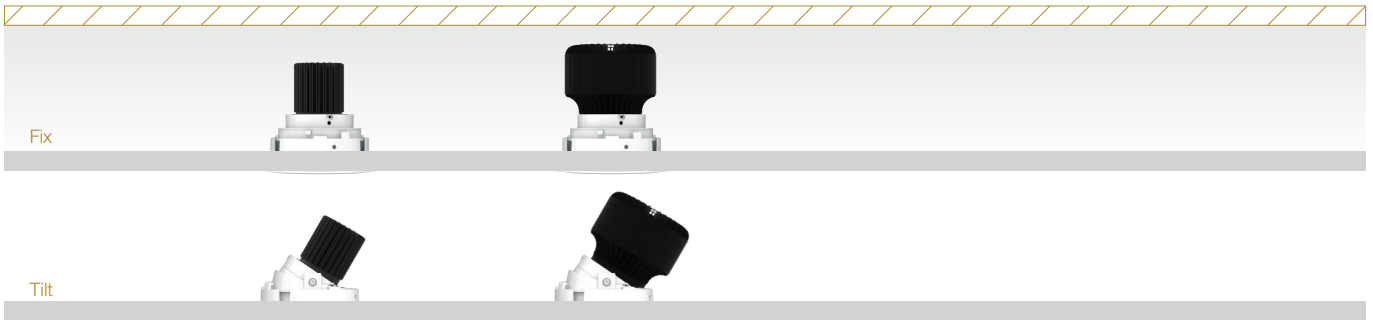
#ROUND
#SQUARE
#FIX
#TILT
#TRIM
#TRIMLESS

SPECIFICATIONS

FIXTURE	
Family Type	Vasari series
Fixture Colours	Matt white, matt black
Reflector Colours	Matt white, matt black, chrome
Fixture Materials	Aluminium (and plastic for chrome reflector)
Accessories	Honeycomb anti-glare louvre, soft lens, linear spread lens, IP54 seal
Ingress Protection	IP40, IP54
LED MODULE & DRIVER	
Compatible LED Modules	700, 500, 300, 100 series LED modules
Lifetime	Up to 50,000 hours L80 lamp life with LM80 tested LED chip packages
Beam Angles	12°, 15°, 20°, 35°, 60°
Colour Temperatures	2700K, 3000K, 3500K, 4000K, 5000K, Warm Dim, tuneWHITE, flexIK
CRI	High Efficiency (CRI-85), ProART (CRI-95), ProART98 (CRI-98)
Driver (Dimming)	Non-dim, phase (leading & trailing edge), 0-10V, DALI

100 Pro /
100 Classic

700 Pro / 500 Pro /
300 Pro



DIMENSIONS (MM)

	Trim				Fix		Tilt		Height (h)				
	Trimless	Trimless	Trimless	Trimless	Trimless	Trimless	Trimless	Trimless	Module	Reflector		Trimless	
ROUND	Ø150 cutout	Ø161	Ø150			(h)	+30°		700P / 500P / 300P: 100P / 100C:	Matt	Dark Light	Matt	
										180	185	216	
										153	158	181	
SQUARE	150 x 150 cutout	161 x 161	150 x 150			(h)	+30°		700P / 500P / 300P: 100P / 100C:	Matt		Matt	
										184		223	
										157		188	

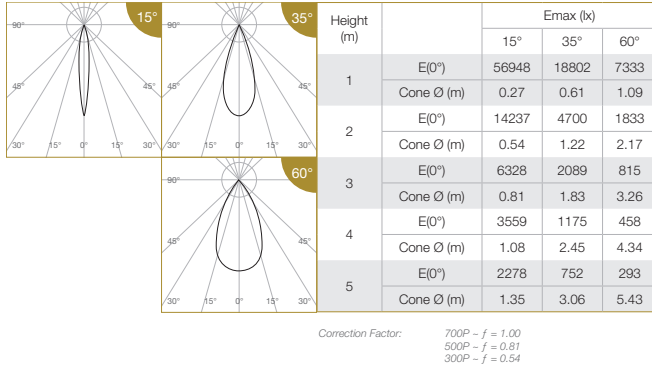
Height increase with accessories:
Anti-Glare Louvre : Height +6
Soft Lens : Height +3
Linear Spread Lens : Height +3

(refer to module driver dimensions)

VASARI 6

PHOTOMETRICS

700 PRO

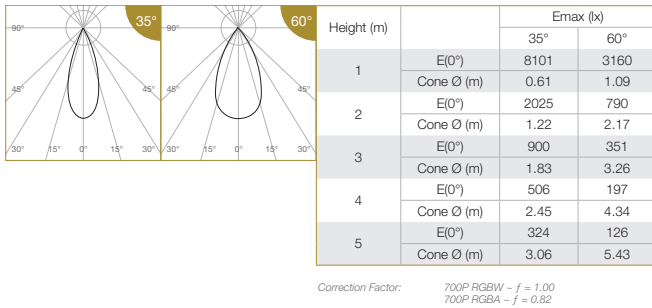


ELR LED Module				700P	500P	300P		
LED Power				66W	54W	36W		
System Power				76W	62W	43W		
Luminous Flux (lm)	Type	Beam Angle	CRI					
	Single CCT (3000K)	15°	High Efficiency Ra-85	ProART Ra-95	7520	6110	4042	
					ProART98 Ra-98			2829
					High Efficiency Ra-85	7520	6110	4042
		35°	ProART Ra-95	ProART98 Ra-98	6392	5194	3436	
							2829	
					High Efficiency Ra-85	7680	6240	4128
	60°	ProART Ra-95	ProART98 Ra-98	6528	5304	3509		
						2890		

Data are based on 3000K (ProART CRI-95). Nominal data of 2700K and 3500K are shared with 3000K. Higher CCT of 4000K and 5000K will have a nominal data value of 5% higher than published. (f = 1.05) High Efficiency CRI-85 will have a nominal data value of 15% higher than published. (f = 1.17) ProART98 CRI-98 will have a nominal data value of 8% lower than published. (f = 0.92)

Nominal CRI-85, equals to Ra>80-87, R9>0
Nominal CRI-95, equals to Ra>90-97, R9>50
Nominal CRI-98, equals to Ra>97-99, R9>93

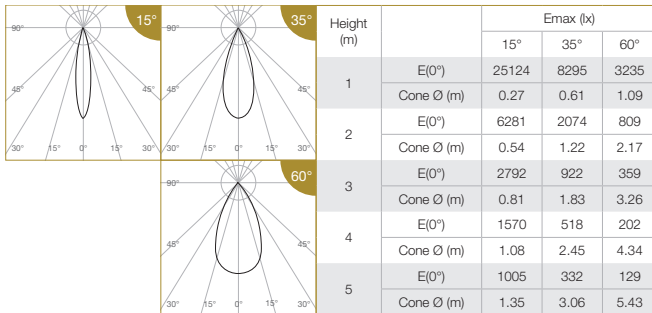
700 PRO RGBW



ELR LED Module				700P	
LED Power				64W	
System Power				74W	
Luminous Flux (lm)	Type	Beam Angle	CRI		
	RGBW	35°	N/A		2754
					2813
		60°	N/A		2270
					2318

Data are based on maximum output of all 4 RGBW channels.

300 PRO TUNEWHITE/FLEXIK



ELR LED Module				300P	
LED Power				36W	
System Power				43W	
Luminous Flux (lm)	Type	Beam Angle	CRI		
	tuneWHITE/flexiK (4000K / 6500K)	15°	ProART Ra-95		2820
					2820
		35°			2820
					2880
60°				2880	

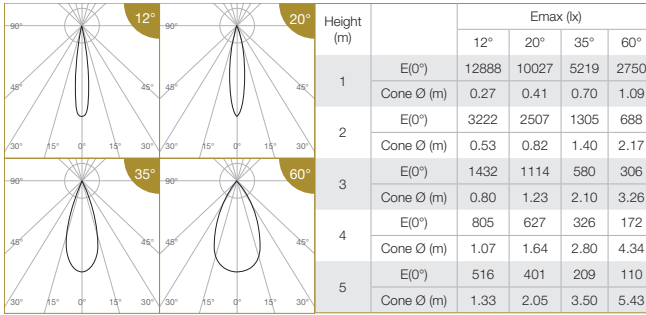
Data are based on maximum output at highest CCT (4000K / 6500K). 2700K will have a nominal data value of 10% lower than published. (f = 0.90) 1800K will have a nominal data value of 30% lower than published. (f = 0.70)

Nominal CRI-95, equals to Ra>90-97, R9>50

VASARI 6

PHOTOMETRICS

100 PRO



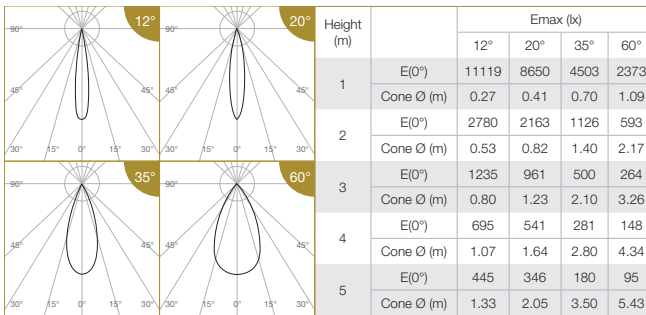
Correction Factor:
 100P - f = 1.00
 100C - f = 0.69

ELR LED Module				100P	100C		
LED Power				23W	17W		
System Power				28W	21W		
Luminous Flux (lm)	Single CCT (3000K)	Type	Beam Angle	CRI			
				High Efficiency Ra-85	ProART Ra-95		
		12°	ProART98 Ra-98	High Efficiency Ra-85	2490	1710	
				ProART Ra-95	2117	1453	
		20°	ProART98 Ra-98	High Efficiency Ra-85	2820	1936	
				ProART Ra-95	2397	1646	
		35°	ProART98 Ra-98	High Efficiency Ra-85	1974	1355	
				ProART Ra-95	2448	1681	
		60°	ProART98 Ra-98	High Efficiency Ra-85	2880	1978	
				ProART Ra-95	2448	1681	
		ProART98 Ra-98				2016	1384

Data are based on 3000K (ProART CRI-95). Nominal data of 2700K and 3500K are shared with 3000K. Higher CCT of 4000K and 5000K will have a nominal data value of 5% higher than published. (f = 1.05)
 High Efficiency CRI-85 will have a nominal data value of 15% higher than published. (f = 1.17)
 ProART98 CRI-98 will have a nominal data value of 8% lower than published. (f = 0.82)

Nominal CRI-85, equals to Ra>80-97, R9>0
 Nominal CRI-95, equals to Ra>90-97, R9>50
 Nominal CRI-98, equals to Ra>97-99, R9>93

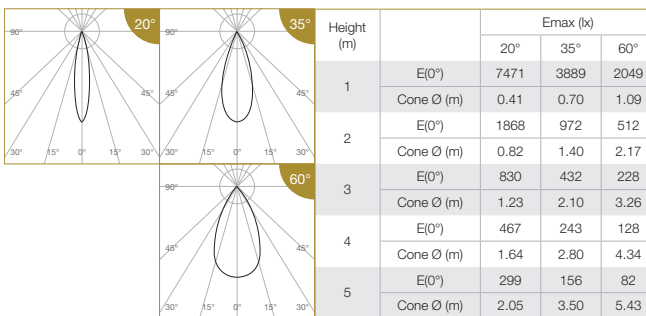
100 PRO WARM DIM



ELR LED Module				100P		
LED Power				23W		
System Power				28W		
Luminous Flux (lm)	Warm Dim (3100K)	Type	Beam Angle	CRI		
				ProART Ra-95		
		12°	ProART Ra-95	ProART Ra-95	1826	
				ProART Ra-95	2068	
		35°	ProART Ra-95	ProART Ra-95	2112	
				ProART Ra-95	2112	

Data are based on maximum output at 3100K.
 Nominal CRI-95, equals to Ra>90-97, R9>50

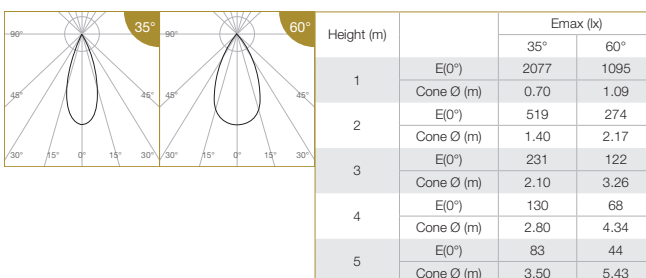
100 PRO TUNEWHITE/FLEXIK



ELR LED Module				100P		
LED Power				23W		
System Power				28W		
Luminous Flux (lm)	tuneWHITE/flexiK (4000K / 6500K)	Type	Beam Angle	CRI		
				ProART Ra-95		
		20°	ProART Ra-95	ProART Ra-95	1786	
				ProART Ra-95	1824	
		35°	ProART Ra-95	ProART Ra-95	1824	
				ProART Ra-95	1824	

Data are based on maximum output at highest CCT (4000K / 6500K).
 2700K will have a nominal data value of 10% lower than published. (f = 0.90)
 1800K will have a nominal data value of 30% lower than published. (f = 0.70)
 Nominal CRI-95, equals to Ra>90-97, R9>50

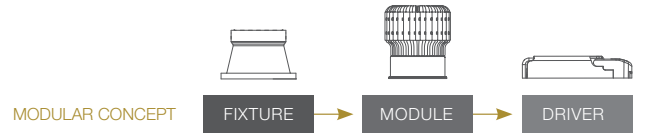
100 PRO RGBW



ELR LED Module				100P		
LED Power				22W		
System Power				26W		
Luminous Flux (lm)	RGBW	Type	Beam Angle	CRI		
				N/A		
		35°	RGBW	RGBW	974	
				RGBW	974	

Data are based on maximum output of all 4 RGBW channels.

VASARI 6



ORDERING MATRIX CHART

Fixture												
Type	Trim Options		Shape		Angle		Colour		Reflector Colour		Accessories	
VASARI-6	T	Trim	RD	Round	FX	Fix	WH	Matt White	WH	Matt White	N	None
	X	Trimless	SQ	Square	TL	Tilt	MB	Matt Black	MB	Matt Black	AGL	Anti-Glare Louvre
									CR	Chrome*	SL	Soft Lens
											LSL	Linear Spread Lens
											IP	IP54**
											ADT	Adapter Ring***

*Chrome reflector is valid for round shape and fix angle fixtures only.

**IP54 seal accessory is valid for fix angle fixtures only.

***Adapter Ring accessory is necessary when paired with 100 series LED module variants.

Single CCT LED Module					Driver				
LED Power	Beam Angle		Colour Temp		CRI		Dimming		
ELR700P	66W	15°	15°	27	2700K	HE	Ra~85	ND	Non-Dim
ELR500P	54W	35°	35°	30	3000K	PA	ProART	PH	Phase*
ELR300P	36W	60°	60°	35	3500K	PP	ProART98*	AN	0-10V
				40	4000K			DA	DALI
				50	5000K				
ELR100P	23W	12°	12°	27	2700K	HE	Ra~85	ND	Non-Dim
ELR100C	17W	20°	20°	30	3000K	PA	ProART	PH	Phase
		35°	35°	35	3500K	PP	ProART98	AN	0-10V
		60°	60°	40	4000K			DA	DALI
				50	5000K				

*ProART98 and phase dimming options are not available with ELR500P and ELR700P LED Modules.

Warm Dim LED Module						Driver			
LED Power	Beam Angle		Colour Temp		CRI		Dimming		
ELR100P	23W	12°	12°	WD	Warm Dim	PA	ProART	PH	Phase
		20°	20°					AN	0-10V
		35°	35°					DA	DALI
		60°	60°						

tuneWHITE LED Module					Driver				
LED Power	Beam Angle		Colour Temp		CRI		Dimming		
ELR300P	36W	15°	15°	TW1831	tuneWHITE	PA	ProART	DA	DALI
		35°	35°	TW1840	1800K-3100K				
		60°	60°	TW2765	1800K-4000K				
ELR100P	23W	20°	20°	TW1831	tuneWHITE	PA	ProART	DA	DALI
		35°	35°	TW1840	1800K-3100K				
		60°	60°	TW2765	1800K-4000K				
				TW2765	2700K-6500K				

flexiK LED Module						Driver			
LED Power	Beam Angle		Colour Temp		CRI		Dimming		
ELR300P	36W	15°	15°	FK##	flexiK	PA	ProART	PH	Phase
		35°	35°						
		60°	60°						
ELR100P	23W	20°	20°	FK##	flexiK	PA	ProART	PH	Phase
		35°	35°						
		60°	60°						

denotes the first two digits of preferred CCT ranging from 1800K to 6500K by increment of 100K.

RGBW / RGBA LED Module					
LED Power	Beam Angle		Colour Temp		
ELR700P	64W	35°	35°	RGBW	Red, Green, Blue, White
		60°	60°	RGBA	Red, Green, Blue, PC Amber
ELR100P	22W	35°	35°	RGBW	Red, Green, Blue, White
		60°	60°		

*Drivers for RGBW / RGBA LED modules are sold separately.

example: VASARI-6.X.RD.FX.WH.CR.N.ELR300P.60.50.PA.DA

*Custom RAL colour options available.